

Under One Umbrella

BENEFITTING THE STANFORD WOMEN'S CANCER CENTER • AUGUST 2023

WELCOME TO OUR FIRST NEWSLETTER

Under One Umbrella was launched in 2009 by a group of local women who formed a committee to raise funds for the creation of the [Stanford Women's Cancer Center](#) at the Stanford Cancer Institute. Thanks to the generous support of the Under One Umbrella (UOU) committee and our community, the center has grown to become a preeminent program specializing in the research and treatment of women's cancers. The mission of the Stanford Women's Cancer Center is to provide comprehensive patient support services to women and their families who are affected by breast and gynecologic cancers—to bring them “under one umbrella” of research and care in one centralized program and facility.

This newsletter is intended to keep friends and supporters of the center informed about the impact of their giving, relevant discoveries in women's cancers, and other related health news. We will also provide information on upcoming events and opportunities to get involved. Please feel free to share this information with others and send us your comments and content ideas.

UNDER ONE UMBRELLA AT A GLANCE

Most of UOU's annual revenue is generated through a [benefit concert](#) held at the Bing Concert Hall on Stanford's campus.

Twelve years of special guest performers include Nicole Kidman, Keith Urban, Trisha Yearwood, Garth Brooks, and Carrie Underwood. These performers have donated their time and talents and have been very involved in procuring performers each year. Both Nicole Kidman and Trisha Yearwood are Honorary Chairs. **Stay tuned for a very special announcement about our next event coming soon!**



more than **\$65 MILLION** raised through Under One Umbrella



100+ INNOVATION AWARDS, 10 RESEARCH GRANTS, and a novel **CLINICAL TRIALS PROGRAM** funded



100% OF PROCEEDS support research and patient care

UNDER ONE UMBRELLA STEERING COMMITTEE



Many thanks to our current members

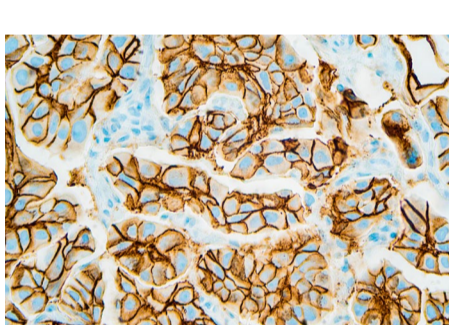
Cynthia Sewell & Judy Zafran, *Chairs* • Lisa Schatz, *Chair Emeritus* • Nicole Kidman, *Honorary Chair* • Trisha Yearwood, *Honorary Chair* • Deborah Berek • Dana Bisconti • Fran Codispoti • Jean Colen • Susie Fox • Jill Freidenrich • Lisa Goldman • Jacque Jarve • Michele Kirsch • Debbie Rachleff • Jane Solomon • Dianne Panos Taube • Jessica Weil • and Laurie K. Lacob (1957-2023)

And to our past members

Suzanne Crandall • Ann Doerr • Lainie Garrick • Jillian Manus Salzman • Lori Perica • and Josie Shiff

PHILANTHROPIC IMPACTS

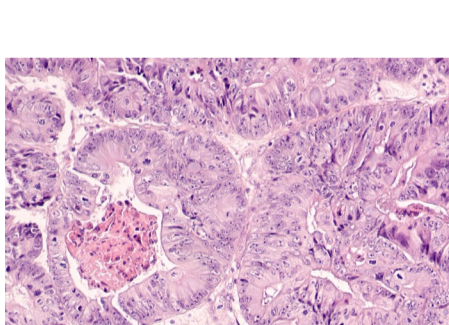
The principal areas of research in our center focus on new methods of screening, early detection, and treatment for breast and gynecologic cancers. We are pleased to share with you some recent advances and research highlights from work made possible by philanthropic generosity.



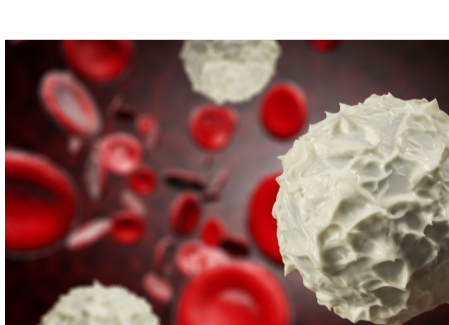
Through seed funding provided by the 2022 Cancer Innovation Awards, **nine new projects received support for research**—from the utilization of artificial intelligence in treatment customization and community-based cancer screenings for refugees, to the development of new antibody targets for better breast cancer treatments, growing 3-D fallopian tube samples, and testing the effects of pathogens that may contribute to ovarian cancer initiation and progression.



Advancements in a new diagnostic method called liquid biopsy, which Stanford is at the forefront of developing, are progressing for women with breast cancer. With a small blood draw from the patient, researchers can now examine circulating tumor DNA—fragments of tumor cells shed into the bloodstream—which serve as an early warning sign of hidden or recurrent disease. Detecting circulating tumor DNA during treatment and years into remission may indicate the need to escalate or resume treatment, whereas its absence could facilitate safe treatment de-escalation.



There have been important contributions made to **improve care for women with endometrial cancer**. Ongoing clinical trials are underway to test whether the cancer can be kept at bay by combining chemotherapy with drugs that boost the immune system. Novel antibody therapeutics have been combined and are being studied in patients with recurrent disease. Without our generous donors, we would struggle to support the coordination required to implement these trials.



A first-of-its-kind clinical trial for ovarian cancer was launched recently, testing an innovative way of using white blood cells to deliver cancer treatment directly to tumors. Developed at Stanford, this technique reengineers a patient's own white blood cells to transport a specialized virus that kills cancer cells but leaves healthy cells alone. When infused into the patient's bloodstream, the reengineered cells release the virus to attack cancer cells. Initial results of the trial are very promising and offer hope for the development of novel cancer treatments.

Support for Under One Umbrella provides patients and their families with customized care and the latest treatments, and helps fund faculty recruitment and research grants for scientific investigations, empowering our researchers to make discoveries and advance innovative clinical trials.

GIVE ONLINE

To learn more about the developments above or for more information about supporting the Stanford Women's Cancer Center, please contact Michele Thompson at michelet@stanford.edu.

Please [click here](#) to share your comments and content ideas or to subscribe to future updates.

If you'd prefer to not receive communications from the Stanford Medicine fundraising office, please leave a detailed message at 844.427.3491 or visit medicalgiving.stanford.edu/opt-out.html.

